



JUNO PAINT SYSTEMS

Private homes - Commercial - Hospitality - Healthcare - Educational - Public environments

A large, white, sans-serif number "2026" is overlaid on the left side of the image, partially covering the brick wall and the green door.

EXTERIORS

Walls, Façades, Railings,
Fences & gates,
Swimming pools,
Communal areas

INTERIORS

Rooms
Bathrooms
Kitchen
Communal areas

WOOD

Furniture
Doors
Sheds & Fences

GARAGES

Walls and ceilings
Floors
Signalling & Marking

Comprehensive
paint solutions for
homes & more!



WELCOME!

We invite you to explore our wide range of high-quality products designed to paint and protect every environment. From interior walls to exterior façades—including kitchens, bathrooms, wood and metal surfaces, floors, and even swimming pools - JUNO delivers the ideal solution for every space.

As a total solutions provider for paints and coatings, our expertise extends far beyond the HOME.

JUNO products are trusted in **commercial developments, hotels and leisure facilities, healthcare** environments, **educational** institutions, and **public buildings**, where long-term performance, safety, and regulatory compliance are essential. Our comprehensive range includes fire-retardant certified paints, highly washable and hygienic emulsions, durable floor coatings, and high-performance exterior systems engineered to withstand demanding conditions.

All JUNO systems are developed with specification in mind, supported by detailed technical documentation and expert guidance to ensure correct product selection and application. Our coatings are formulated to meet relevant industry standards and regulatory requirements, helping specifiers, contractors, and facility managers deliver projects with confidence.

Sustainability is also central to our approach. JUNO continually invests in responsible manufacturing practices, low-VOC formulations, and long-lasting solutions that reduce maintenance cycles and environmental impact over time.

With almost 100 years of experience in manufacturing and distributing paint, JUNO has become a trusted name across residential, commercial, and institutional projects—delivering innovative solutions of exceptional quality.

If you truly care about the spaces you create and protect, choose JUNO!

***The products shown in this brochure are only a small selection of JUNO's available product range. For more information on our products consult our main product catalogue or visit our website.**

EXTERIORS



JUNO

PAINTS

PAINTS AND COATINGS FOR EXTERIORS

EXTERIOR COATINGS



JUNOKRIL Product Ref.: 60.500

Finish: Matt or satin
Application: Brush, roller or conventional/airless spray
Colours: From the JUNO Façades colour chart and Junomatic Tinting system
Practical Coverage: 10 -12 m2 / l per coat

- Excellent opacity and coverage from first coat
- Perfect adhesion when applied to mineral surfaces
- Resistant to very humid environments
- Impermeable to rain and liquid water, and permeable to vapour and humidity.
- Efficient anti-carbonation barrier, reducing degradation of concrete structures and cladding .
- Prevents formation of mould and micro-organisms
- Excellent washability and friction resistance.
- Does not propagate fire - Fire Retardant to Euroclass Bs1,d0



ADHESION

PERMEABILITY

ANTI-CARBONATION

FIRE RETARDANT
B-s1,d0

EXTERIOR COATINGS



BIKRIL Product Ref.: 60.100

Finish: Matt, satin or silk
Application: Brush, roller or conventional/airless spray
Colours: From the JUNO Façades colour chart and Junomatic Tinting system
Practical Coverage: 10-12 m2 / l per coat

- Excellent adhesion
- Eggshell finish with a silky touch
- Own BIKRIL/Luna color chart with special color stable and UV resistant colors.
- Antimould protection
- High opacity and coverage properties
- Thixotropic and consistent finish
- Breathable
- Anti-carbonation protection
- Good resistance to atmospheric agents, dust and other pollutants
- Excellent washability
- Fire retardant to Euroclass Bs1 d0



ADHESION

PERMEABILITY

ANTI-CARBONATION

FIRE RETARDANT
B-s1,d0

RECOMMENDED USE

For **render, masonry, cement and concrete** surfaces where you want to get maximum protection and durability.

PAINT SYSTEM



To clean



- Remove stains and dust.
- Remove all dirt, grease, loose or chalking paint.
- Apply **RAP PLASTER** (77.301) to repair minor defects Use a sand and cement mix for larger holes and cracks.

To prime



- Apply a coat of **PRIMERLITE** pliolite primer (21.702), diluted 10% with **JUNO D-16 White Spirit** (50.012).

- Leave to dry for a minimum of 24 hours.
- Apply 2 or more coats of **BIKRIL or JUNOKRIL** diluted with maximum 10% water.
- Wait at least 6 hours between coats.

Finish



EPD[®]
THE INTERNATIONAL EPD[®] SYSTEM

JUNO

PAINTS

WATERPROOFING FAÇADES, ROOFS & TERRACES

ELASTOMERIC PAINT - VERTICAL



ELASTIFLEX

Product Ref.: 62.601

Finish: Semi-matt.

Application: Brush, roller or conventional/airless spray.

Colours: White/P & Deep base.

Practical Coverage: 6-8 m2 / l per coat.

- High performance crack-bridging elastomeric coating.
- Anti-carbonation protection and excellent durability.
- Protection against solar radiation.
- Resistant to water and permeable to water vapour.
- With anti-mould, fungi and algae preservatives.
- Permanent elasticity (from -30°C to 60°C)



RECOMMENDED USE

For waterproofing **façades**, **terraces** and **ceilings/roofs**. Also eliminates moisture problems in hard to reach places.

PAINT SYSTEM



To clean



- Make sure that the surface is sound, clean, dry and free from mould and efflorescence.

To prime



- Apply a coat of **PRIMERLITE** (21.702), diluted 10% with **JUNO D-16 White Spirit** (50.012).
- Leave to dry for a minimum of 4 hours.

Finish



- Apply 2 or more coats of **ELASTIFLEX** or **JUNOTERAS** until getting a 1 mm layer of dry paint.
- Reinforce with a fibreglass meshing between coats to strengthen the system if necessary.

ELASTOMERIC PAINT - HORIZONTAL



JUNOTERAS

Product Ref.: 62.641

Finish: Semi-matt

Application: Brush, roller or conventional/airless spray

Colour: White, red, green and grey

Practical Coverage: 0.5 m2 / l per coat (50 microns DFT)

- High performance coating with acrylic copolymers
- Excellent durability
- Solar reflective
- Protection against UV solar radiation
- Resistant to water and permeable to water vapour.



**JUNO****PAINTS**

PROTECTION FOR RAILINGS, FENCES AND GATES

SYNTHETIC ENAMEL



OXIFORJA Product Ref.: 05.700

Finish: Wrought iron effect.
Application: Brush, roller or conventional/airless spray
Colour: Oxiforja colour chart
Practical Coverage: 10 m² / l per coat

- Great resistance to corrosion and the outside elements.
- Easy to apply and quick drying.
- Excellent elasticity, hardness and adhesion.
- Decorative exclusive and natural metallic finish (ironwork).



SYNTHETIC PRIMER



MULTI-SURFACE PRIMER Product Ref.: 27.040

Finish: Semi-matt
Application: Brush, roller or conventional/airless spray
Colour: White, Black and Deep Base
Practical Coverage: 10 m² / l per coat

- Formulated with high penetration resins
- Optimises finishing and repainting
- Provides a long-lasting antio-corrosive coat
- Recommended for use on all types of surfaces and substrates.

RECOMMENDED USE

For metal surfaces, doors, fences, gates, lampposts, urban exterior furniture, etc. Where you want an antioxidant protection and a wrought iron style finish.

PAINT SYSTEM

To clean



- Remove any grease and rust.
- Remove all dirt, loose or flaking/chalking paint.
- Clean surface and let dry.
- Wirebrush if necessary.

To prime



- Apply a **MULTISOPORTE (MULTISURFACE) primer** coat diluted with maximum 10% **D-17 Quick Drying Solvent (50.004)**.
- Leave to dry for a minimum of 24 hours.

Finish



- Apply 2 or more coats of **OXIFORJA**. If applied using a conventional/airless spray, dilute a maximum of 15% with **JUNO D-16 Solvent (50.012)**.
- Wait at least 24 hours between coats.

EPD[®]
THE INTERNATIONAL EPD[®] SYSTEM



JUNO

PAINTS

SWIMMING POOLS AND SPORTS FACILITIES

CHLORINATED RUBBER POOL PAINT



PISCICLOR

Product Ref.: 09.180

Finish: Satin

Application: Brush, roller or conventional/airless spray.

Colour: Blue

Practical Coverage: 8 m² / l per coat

- High hiding power and strong colour retention.
- Excellent adhesion.
- Resistant to water and abrasion.
- Resistant to fresh and salt water and sun protection oils.
- Resistant to poolwater care products.

WATER-BASED ACRYLIC POOL PAINT



JUNOSPORT

Product Ref.: 06.105

Finish: Satin

Application: Brush, roller or conventional/airless spray

Colour: Blue

Practical Coverage: 7-8 m² / l per coat.

- High hiding power and colour retention
- Excellent hardness and flexibility
- Excellent weatherproofing
- Specially formulated for use in concrete swimming pools.

RECOMMENDED USE

For painting and protecting **swimming pools, tennis courts** and other **sports facilities**.

PAINT SYSTEM

To clean



- Remove paint in poor condition and, if necessary, repair the Surface.
- Clean with a bleach solution diluted 30% with water
- Rinse with water and let dry

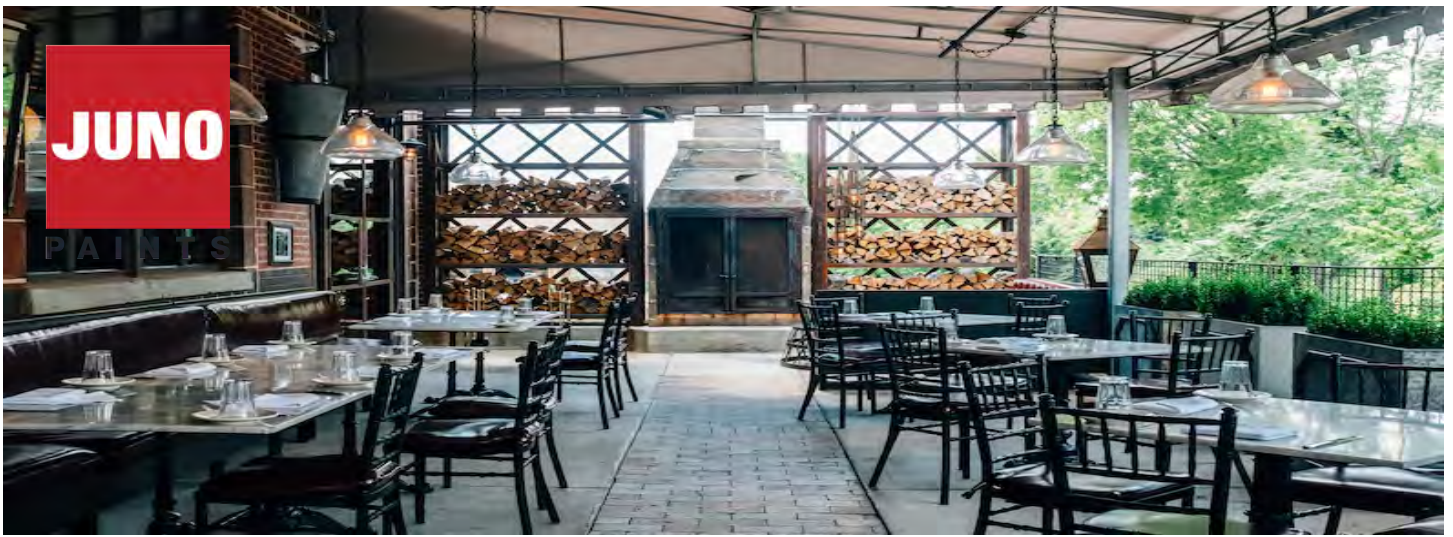
To apply



- Dilute the first coat 20-30% with **D-40 Chlorinated Rubber Solvent** (50.000). For the second coat, apply as is, or dilute with 5% solvent.
- If applied with conventional/airless spray, dilute it 10-15% with **D-40**
- Wait at least 24 hours between coats

Once the swimming pool has been painted, wait at least 15 days for the paint to cure before refilling water.

EPD[®]
THE INTERNATIONAL EPD[®] SYSTEM



COMMUNAL EXTERIOR AREAS

SYNTHETIC ENAMEL



JUNOPLUS Product Ref.: 16.000
Finish: Gloss & Satin
Application: Brush, roller or conventional/airless spray.
Colour: White and Junoplus colour chart.
Practical Coverage: 12 m² / l per coat.

- High quality lead-free enamel
- For indoor and outdoor use.
- Good Weather resistance
- Excellent brightness and colour fastness
- Easy to apply and very good washability
- Hardness and higher resistance to knocks, scuffs and abrasion.



RECOMMENDED USE

For decorating and protecting **wooden, masonry and metal surfaces.**

PAINT SYSTEM

To clean



- Remove stains, dust and flaking/chalking paint in poor condition.
- Sand lightly to completely remove the gloss in remaining paint.
- Thoroughly rinse and allow to dry.

To prime



- Apply a coat of **MULTISOPORTE (MULTI-SURFACE) primer** diluted with a maximum of 10% **D-17 Quick Drying Solvent** (50.004).
- Leave to dry for a minimum of 24 hours.

Finish



- Apply 2 or more coats of **JUNOPLUS or JUNOLAC AO** for use. If applied using a conventional/airless spray, dilute a maximum of 15% with JUNO D-16 white spirit (50.012).
- Wait at least 24 hours between coats.

JUNOLAC ANTI-CORROSIVE PAINT



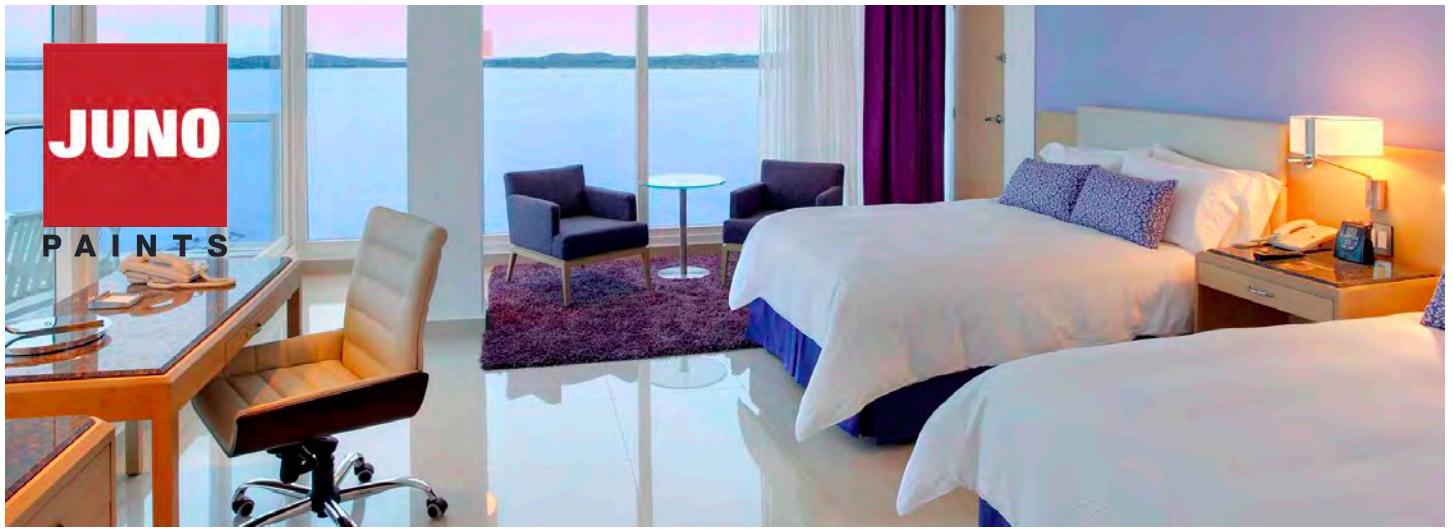
JUNOLAC AO Product Ref.: 15.100
Finish: Gloss & Satin
Application: Brush, roller or conventional/airless spray
Colour: White and TR-Base
Practical Coverage: 12 m² / l per coat

- Excellent quality lead-free lacquer
- Good weather resistance
- Formulated on a base of polyurethane resins
- For indoor and outdoor use.
- Excellent colour fastness and decorative finish



INTERIORS





JUNO
PAINTS

DECORATION OF ROOMS/LIVING AREAS

INTERIOR WALLS



JUNOPROF Product Ref.: 88.750

Finish: Matt
Application: Brush, roller or conventional/airless spray.
Colour: White and JUNOMATIC colours.
Practical Coverage: 10-12 m² / l per coat.

- High performance emulsion paint.
- Excellent decorative finish.
- High performance and coverage.
- High adhesion and washability.
- Available in virtually any colour with Junomatic Tinting system.
- Anti-mould protection
- Fire retardant certified - Euroclass Bs1,d0



INTERIOR CEILINGS



B-5 Product Ref.: 73.001

Finish: Matt
Application: Brush, roller or conventional/airless spray.
Colour: White
Practical Coverage: 10-12 m² / l per coat

- Breathable washinterior emulsionable matt paint.
- Very good performance and resistant to wet rubbing.
- Excellent whiteness and coverage.



ALTERNATIVE OPTION

J-25 Product Ref.: 73.150
 High quality trade washable matt emulsion paint.

RECOMMENDED USE

For decorating and protecting **cement, plaster or stone** walls and ceilings where excellent quality finish is desired.

PAINT SYSTEM

To clean



- Remove stains, dust, flaking paint and previous treatments in poor condition.
- In the case of mould, mildew, etc., wash with a 10% bleach and water

To prime



- Apply a coat of **HIDROCRIL** (81.006), diluted 1:4 with water. In the case of projected plasters, seal the surface with **AQUASELL** (21.203).
- Leave to dry for a minimum of 2 hours.

Finish



- Apply 2 or more coats of **JUNOPROF** diluted with 10% water.
- Allow at least 6 hours between coats.



JUNO

PAINTS

DECORATION OF BATHROOMS/WET AREAS

WALLS



B-12

Product Ref.: 72.010

Finish: Semi-matt (eggshell)

Application: Brush or roller

Colour: White + colours

Practical Coverage: 10-12 m² / l

- Top quality water-based paint with a silky touch.
- Contains mould resistant preservatives.
- Very resistant to wet rubbing.
- High performance and coverage for excellent decorative finish.
- Fire retardant certified to Euroclass Bs1,d0

ALTERNATIVE
OPTION

AQUALAC

Product Ref.: 10.300

Quick drying water-based enamel.

CEILINGS



ANTI-CONDENSATION

Product Ref.: 62.650

Finish: Matt

Application: Brush or roller

Colour: White

Practical Coverage: 1 m² / l per coat

- Special condensation resistant and thermally insulating water-based paint.
- With mould resistant preservatives.
- Reduces acoustic resonance in any space.
- For use in areas with risk and presence of condensation.

RECOMMENDED USE

For decorating and protecting all kinds of surfaces in bathrooms: metal, wood, plaster, plasterboard, ceramic, etc...

PAINT SYSTEM



To clean



- Remove stains, dust, flaking paint and previous treatments in poor condition.
- Sand lightly to completely remove any gloss.

To prime



- Apply a coat of **HIDROCRIL** (81.006), diluted 1:4 with water. In the case of projected plasters, seal the surface with **AQUASELL** (21.203).
- Leave to dry for a minimum of 2 hours.

Finish



- Apply 2 or more coats of **B-12** diluted with 10% water.
- Allow at least 6 hours between coats.

EPD[®]
THE INTERNATIONAL EPD[®] SYSTEM



PROTECTION OF KITCHEN WALLS & FLOORS

WATER-BASED ENAMEL - WALLS



AQUALAC

Product Ref.: 10.300

Finish: Matt, satin or gloss
Application: Brush or roller
Colour: White and JUNOMATIC colours
Practical Coverage: 10-12 m² / l per coat

- Stable and covering colours.
- Permanent whiteness
- Excellent leveling
- Outdoor resistance
- Washable
- Good hardness
- Low odor
- Quick drying
- Does not propagate fire - Fire retardant Bs1,d0



WATER-BASED EPOXY - WALLS



DYNAPOK AGUA

Product Ref.: 07.132

Finish: Satin
Application: Brush or roller
Colour: White, Grey, English Red and Green plus JUNOMATIC colours
Practical Coverage: 8 m² / l per coat

- Excellent adhesion on mineral surfaces
- Mechanical and chemical resistance
- High resistance to formation of fungicide
- Its properties make it ideal for interior garages, parkings, machine rooms, basements, commercial flooring for industrial and retail spaces, etc.
- Highly recommended for interior walls, floors, showers, wetrooms, f kitchens etc. Suitable for places with poor ventilation
- Low VOC content



RECOMMENDED USE

Epoxy enamel is used for protecting surfaces exposed to contact with water, grease or acids. Very easy to clean and gives excellent chemical resistance.



To clean



- Remove stains and dust and any Paint in poor condition.
- Clean properly and let dry.

Finish



- Apply 2 or more coats of **DYNAPOK AGUA** diluted with maximum 10% water.
- Allow at least 24 hours between coats.
- If repainted after 72 hours, a light sanding is required.

Preparing the mixture: Mix the 2 components well in the right proportion. Once the mixture has been prepared, wait 10 minutes before using it.





DECORATION OF INTERIOR WALLS/CEILINGS

WASHABLE MATT - COLOURS



JUNOPROF

Product Ref.: 88.868

Finish: Matt

Application: Brush, roller or conventional/airless spray.

Colour: White and JUNOMATIC colours.

Practical Coverage: 10-12 m² / l per coat.

- High performance emulsion paint.
- Excellent decorative finish.
- High performance and coverage.
- High adhesion and washability.
- Available in virtually any colour with Junomatic Tinting system.
- Anti-mould protection
- Fire retardant certified - Euroclass Bs1,d0



ALTERNATIVE OPTION

B-10 Product Ref.: 72.000
Excellent quality eggshell finished emulsion.

Certified Anti-Reflex Paint



J-33 OPAK

Product Ref.: 73.424

Finish: Extra-Matt

Application: Brush, roller or conventional/airless spray

Colour: White

Practical Coverage: 10-12 m² / l per coat

- Extra-matt paint with excellent washability (Class 1).
- Superior opacity (Class 1).
- Anti-mould protection
- Fire retardant certified - Euroclass Bs1,d0

RECOMMENDED USE

For protecting and decorating cement, plaster or stone walls and ceilings where you want an excellent quality, resistant, long-lasting finish.

PAINT SYSTEM

To clean



- Remove stains, dust, paint in poor condition and non-adhesive materials.
- In the case of mould, mildew, etc., wash with a 10% bleach and water solution and rinse.

To prime



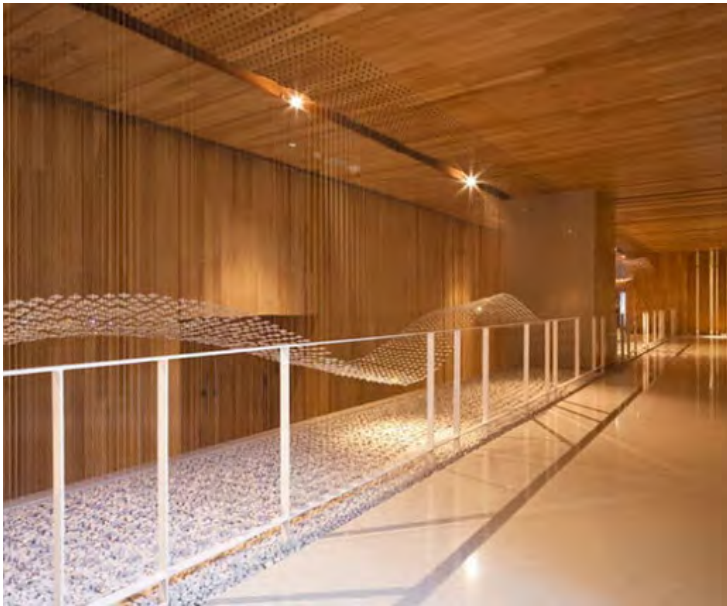
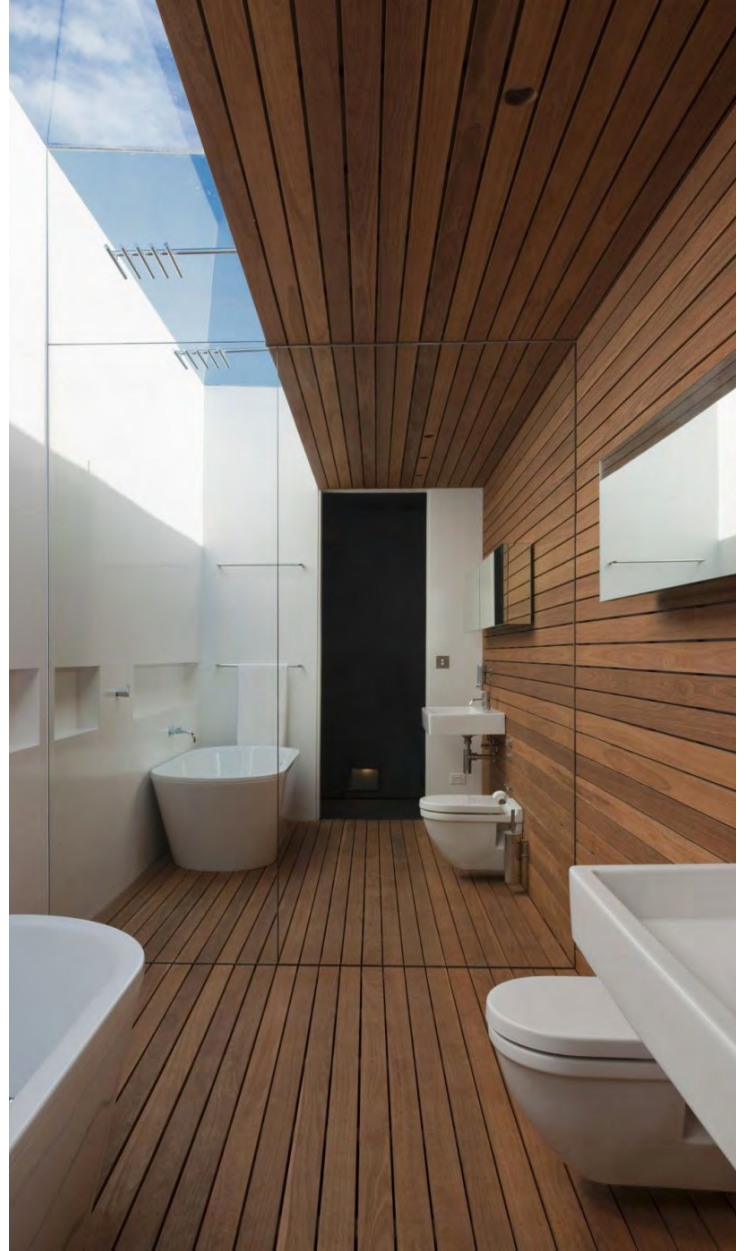
- Apply a coat of **HIDROCRIL** (81.006), diluted 1:4 with water. In the case of projected plasters, seal the surface with **AQUASELL** (21.203).
- Leave to dry for a minimum of 2 hours.

Finish



- Apply 2 or more coats of **JUNOPROF** or **J-33** diluted up to 10% with water. (J33 can be diluted up to 25% no problem)
- Allow at least 6 hours between coats.

WOOD



JUNO

PAINTS

DECORATION AND PROTECTION OF FURNITURE

WATER-BASED VARNISH



AQUADUR

Product Ref.:82.480

Finish: Gloss, satin or matt

Use: Interior

Application: Brush or roller

Colour: Colourless

Practical Coverage: 10 - 12 m² / l per coat

- Special odourless water-based varnish for woodwork.
- Non-yellowing.
- Leaves a film which is pleasant to the touch.
- High adhesion and resistance to rubbing.
- Finish allows wood to breathe.

SYNTHETIC VARNISH



JUNOLAC VARNISH

Product Ref.: 42.037

Finish: Gloss or satin

Use: Indoor/outdoor gloss. Indoor satin

Application: Brush or conventional/airless spray

Colour: Colourless

Practical Coverage: 10 - 14 m² / l per coat

- Varnish with excellent decorative and protective properties.
- With ultraviolet filters.
- High resistance to water and detergents.
- High performance and coverage.

RECOMMENDED USE

For protecting and decorating **wooden surfaces** where you want a hard, flexible, resistant, decorative finish with enhanced gloss and maintaining cleanliness of the wood.

PAINT SYSTEM



To clean



- Wood must be clean, dry and sanded, with a moisture content of less than 15%
- Product can be applied on varnishes in good condition, but it is better to remove previous layers.
- Clean very resinous wood with D-45 Solvent (50.017).
- For new wood, apply **FONDO ACUOSO (AQUEOUS BASE)** (82.414) beforehand, diluted to 10% - 20% in

Finish



- **AQUADUR:** 2 or more coats diluted to 10-20% in water at intervals of 4-6 hours between coats..
- **JUNOLAC:** 2 or more coats for use at intervals of 6-8 hours between coats.

Apply in fine, well spread coats in the same direction, avoiding runs / chips / peeling, until you have a uniform gloss finish.

EPD[®]
THE INTERNATIONAL EPD[®] SYSTEM



DECORATION AND PROTECTION OF FURNITURE

LASUR



LASUR WOODSTAIN

Finish: Satin
Application: Brush
Use: For indoor/outdoor use (except colourless)
Colour: Colourless and Lasur (Woodstain) colour chart
Practical Coverage: 10 - 12 m² / l per coat

Product Ref.: 82.451

- * Excellent quality protective, acrylic, open pore woodstain.
- * Good penetration into wood.
- * Does not seal wood, leaving its natural porosity open.
- * Stains wood without covering it, thus respecting its natural look.
- * UV resistant.
- * Effective against water, salts or other climatic pollutants.
- * Very breathable.

SPECIAL FOR PARQUET FLOORS



JUNODUR

Finish: Gloss and satin
Use: Interior
Application: Brush
Colour: Colourless
Practical Coverage: 10 - 12 m² / l per coat

Product Ref.: 44.001

- * Synthetic polyurethane varnish for indoor use.
- * Protective, decorative finish which is very pleasant to the touch.
- * Formulated for restoring and varnishing parquet flooring.
- * Resistant to domestic use and neutral cleaning products.

RECOMMENDED USE

For wood surfaces exposed to the elements, where maximum protection and care are required.

PAINT SYSTEM

To clean



- Wood must be clean, dry and sanded, with a moisture content of less than 15%
- It can be applied on varnishes in good condition, but it is better to remove previous coats.
- Clean very resinous wood with D-45 Solvent (50.017).

Finish



- Apply 2 or more coats of **LASUR WOODSTAIN** for use, lightly sanding between coats
- Allow at least 12 hours between coats.

Apply in fine, well spread coats in the same direction, avoiding runs/chips/peeling, until you have a uniform gloss finish. The number of coats will influence the tone of the colour obtained.





JUNO

PAINTS

PAINTING AND PROTECTING FURNITURE & TRIMS

WATER-BASED ENAMEL



Product Ref.: 10.300

AQUALAC

Finish: Matt, satin or gloss
Use: Indoor/outdoor gloss and satin.
Indoor matt

Application: Brush or roller
Colour: White and JUNOMATIC colours
Practical Coverage: 10 m² / l per coat

- High quality quick drying water-based enamel.
- Excellent gloss and colour retention.
- Non-yellowing.
- High performance and coverage.
- Very good flexibility and washability.
- Low odour.

RECOMMENDED USE

For decorating and protecting **wooden, masonry and metal** surfaces

PAINT SYSTEM



To clean



- Remove stains and dust and coatings in poor condition
- Sand lightly to completely remove any gloss for improved adherence.

To prime



- Apply a coat of prescribed primer as per TDS (depending on substrate type)
- Allow to dry for a minimum of 24 hours.

Finish



- Apply 2 or more coats of your chosen **ENAMEL TOPCOAT**.

SYNTHETIC ENAMEL



Product Ref.: 15.100

WATERPLUS

Finish: Matt or satin
Use: Interior
Application: Brush, roller or conventional/airless spray
Colour: White and TR-Base for tinting
Practical Coverage: 12 m² / l per coat

- Excellent quality lead-free enamel.
- Superb colour fastness.
- Decorative finish.
- Hardness and higher resistance to knocks, scuffs and scratches.

EPD[®]
THE INTERNATIONAL EPD[®] SYSTEM

CAR PARKS





GARAGE CEILING AND WALLS

WHITE WALL & CEILING PAINT



J-25 WHITE Product Ref.: 73.150

Finish: Matt
Application: Brush, roller or conventional/airless spray
Colour: White
Practical Coverage: 10-12 m² / l per coat

- Emulsion paint with high hiding power.
- Excellent value for money.
- Formulated for general use in construction and decoration.
- Very resistant to wet rubbing.
- High quality matt finish.

FIRE RETARDANT
B-s1,d0

WASHABILITY
CLASS 2

OPACITY
CLASS 2

BLACK WALL & CEILING PAINT



J-25 BLACK Product Ref.: 73.168

Finish: Matt
Application: Brush, roller or conventional/airless spray
Colour: Black
Practical Coverage: 10-12 m² / l per coat

- Emulsion paint with high hiding power.
- Excellent value for money.
- Formulated for general use in construction and decoration.
- Very resistant to wet rubbing.
- High quality matt finish.

FIRE RETARDANT
B-s1,d0

WASHABILITY
CLASS 2

OPACITY
CLASS 2

RECOMMENDED USE

For protecting and decorating **cement, plaster or stone walls** and ceilings where you want an excellent quality, resistant, long-lasting finish.

PAINT SYSTEM



To clean



- Remove stains, dust, paint in poor condition and flaking loose materials.
- In case of mould, mildew, etc., wash with a 10% bleach and water solution and rinse.

To prime



- Apply a coat of **HIDROCRIL (81.006)**, diluted 1:4 with water. In the case of projected plasters, seal the surface with **AQUASELL (21.203)**.
- Leave to dry for a minimum of 2 hours.

Finish



- Apply 2 or more coats of **J-25** diluted with 10% water.
- Allow at least 6 hours between coats.



2-PACK FLOOR PAINT

2K WATER-BASED EPOXY



DYNAPOK AGUA

Product Ref.: 07.132



Finish: Satin

Application: Brush or roller

Colour: White, Grey, English Red and Green. Tintable to any colour in JUNOMATIC tinting system.

Practical Coverage: 8 m² / l per coat

- Epoxy enamel with a high chemical and mechanical resistance.
- Excellent adhesion and washability.
- With dust resistant properties.
- Slip-resistant certified Class 3

AgBB



CERTIFICATE
HEALTH

SLIP RESISTANT

FIRE RETARDANT
Bfl-s1

2K POLYURETHANE



JUNORETANO 2/C

Product Ref.: 88.000

Finish: Gloss

Application: Brush or conventional/airless spray

Colour: White and JUNOMATIC colours

Practical Coverage: 11 m² / l per coat

- Wide range of colors
- When polymerizing, forms a hard and glossy film
- Great adherence and elasticity
- Excellent resistance to oils, lubricants, solvents and aggressive chemicals
- Excellent outdoor properties
- Resists dry heat up to 150°C
- Resistant to industrial and marine environments
- Excellent coverage
- Excellent gloss retention
- Easy application

SLIP RESISTANT

FIRE RETARDANT
B-s1,d0

C4

C5

RECOMMENDED USE

Polyurethane is recommended for painting **industrial floors, garages** etc. thanks to its excellent adhesion and resistance in industrial and marine environments

PAINT SYSTEM



To clean



- The surface must be rough and free of grease, rubber, curative agents, lime slurry, etc.
- Grease and rubber can be cleaned with solvent or detergent. If they persist, use sand blasting
- Lime slurry and curative agents must be removed by grinding or shot blasting.

Finish



- Apply 2 coats of **JUNORETANO 2/C**, diluting the first coat with up to 20% **D-70 Solvent** (50.007). Subsequent coats can be applied without diluting or up to max. 5%.
- Wait 24 hours between coats.

Mixture: Add Component B to Component A and shake/stir until you get a homogeneous mixture. Leave it to stand for 30 minutes before using the paint.



SINGLE PACK FLOOR PAINT

CHLORINATED RUBBER BASED PAINT



DYNAMOL

Product Ref.: 09.500

Finish: Satin
Application: Brush, roller or conventional/airless spray
Colour: White, Black, Grey, Red, Green and Yellow
Practical Coverage: 8 m² / l per coat

- Quick drying chlorinated rubber paint.
- High resistance to acids and alkalis.
- Great mechanical resistance
- Elevated chemical resistance
- Excellent resistance to aggressive environments
- Quick drying
- High resistance on exterior surfaces

SLIP RESISTANT

WATER-BASED PAINT



JUNOSOL



Product Ref.: 06.162

Finish: Satin
Application: Brush, roller or conventional/airless spray
Colour: White + Colours
Practical Coverage: 8 m² / l per coat

- Acrylic styrene resin based paint
- Excellent adhesion and resistance to abrasion
- Great hardness and protection

SLIP RESISTANT

FIRE RETARDANT
B-s1,d0

ALTERNATIVE
OPTION

JUNORETANO PU

Product Ref.: 88.880

Polyurethane enamel for JUNOMATIC tinting system.

RECOMMENDED USE

Thanks to its high resistance, it is especially recommended for marking and signposting **roads, garages, sports facilities, parking spaces...**

PAINT SYSTEM

To clean



- The surface must be rough and free of grease, rubber, curing agents, lime slurry, etc.
- Grease and rubber can be cleaned with solvent or detergent. If they persist, use sand blasting
- Lime slurry and curative agents must be removed by grinding or shot blasting.

Finish



- Do not apply on wet or hot surfaces.
- Apply 2 coats of **DYNAMOL**, the first preferably by brush to facilitate penetration
- Allow 24 hours between coats.

EPD[®]
THE INTERNATIONAL EPD[®] SYSTEM

Choose JUNO for Your Next Paint Project

Are you planning to paint or renovate your home? Whether you're working on a small refresh or a large-scale project to decorate and protect your space, JUNO is here to help.

From **private homes** to **commercial, hospitality, healthcare, educational,** and **public environments**, we support projects of every size and type. Our expert team will guide you through every stage—from planning and product selection to application advice—ensuring you achieve outstanding, long-lasting results.

JUNO specialists recommend the most suitable paints and coating systems for your specific project, providing technical guidance and ensuring compliance with the latest industry standards and regulations.

Contact us today and let JUNO help you bring your project to life with confidence.





PAINT MANUFACTURERS SINCE 1927



JUNO PAINTS LTD.
Unit 1, Zone 5 Clonminam Business
Park Portlaoise, Co. Laois IRELAND
R32W2RW
Phone: (+353) 057 867 0634
info@junopaints.ie
www.junopaints.ie

JUNO PAINTS CENTRAL HQ
Barrio Saconi, 10
48950 Erandio (Bizkaia) SPAIN
Tel.: +34 944 670 062 - Fax: +34 944 675 832
infoweb@juno.es
www.junopaints.com
www.juno.es

